



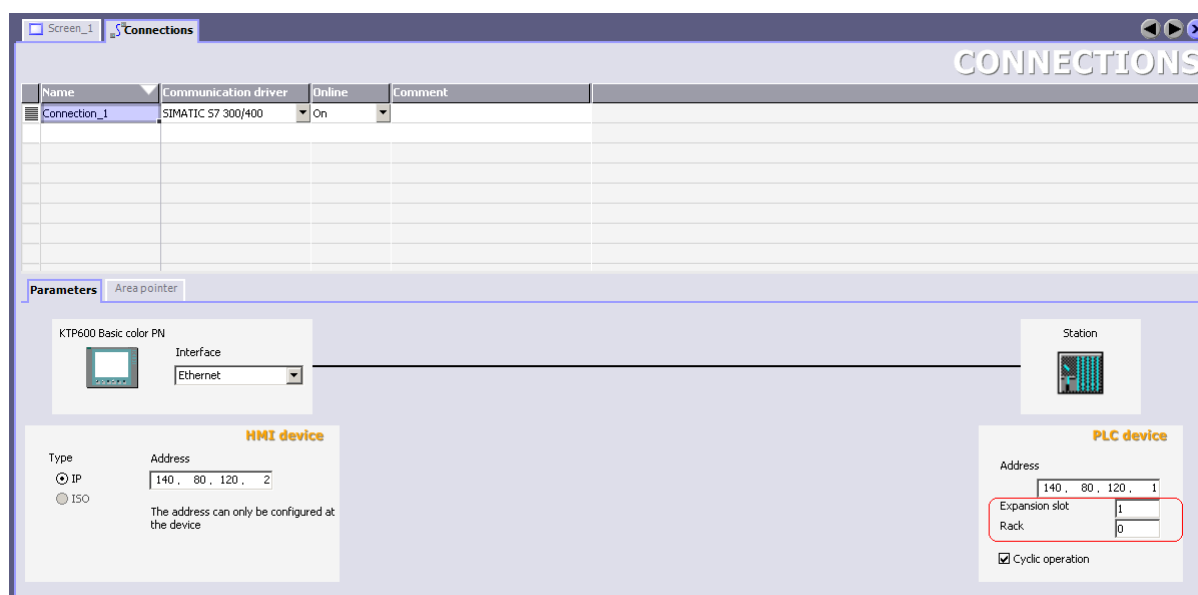
## Industry IA / DT – Technical Support / Hotline – FAQ

### Date and time synchronization between S7-1200 and HMI with WinCC flexible 2008 SP1

The follow sample program shows how it is possible to synchronize date and time between a S7-1200 and a HMI programmed with WinCC flexible 2008 SP1 HF1.

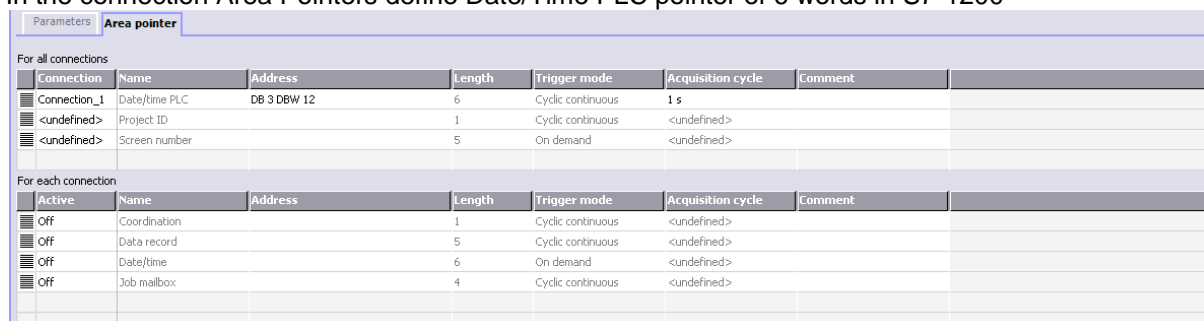
#### General settings

In the HMI connection is defined with S7-300/400 driver and rack =0 and slot = 1:



#### To transfer the date from PLC to HMI

In the connection Area Pointers define Date/Time PLC pointer of 6 words in S7-1200

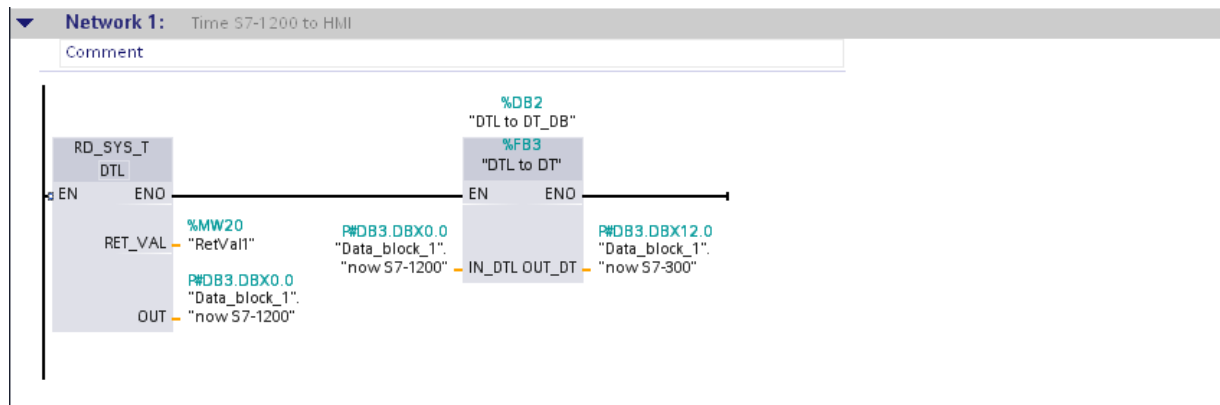


In S7-1200, read the System Time and convert from S7-1200 DTL format to S7-300 DT format. The FB3 (“DTL to DT”) in the sample program converts these data types. Load the converted format to the same address of the open defined area pointer. Note: The S7-300 DT format has less bytes that the area pointers, so the DB interface must have a “reserve” like defined in the DB3.



## Industry IA / DT – Technical Support / Hotline – FAQ

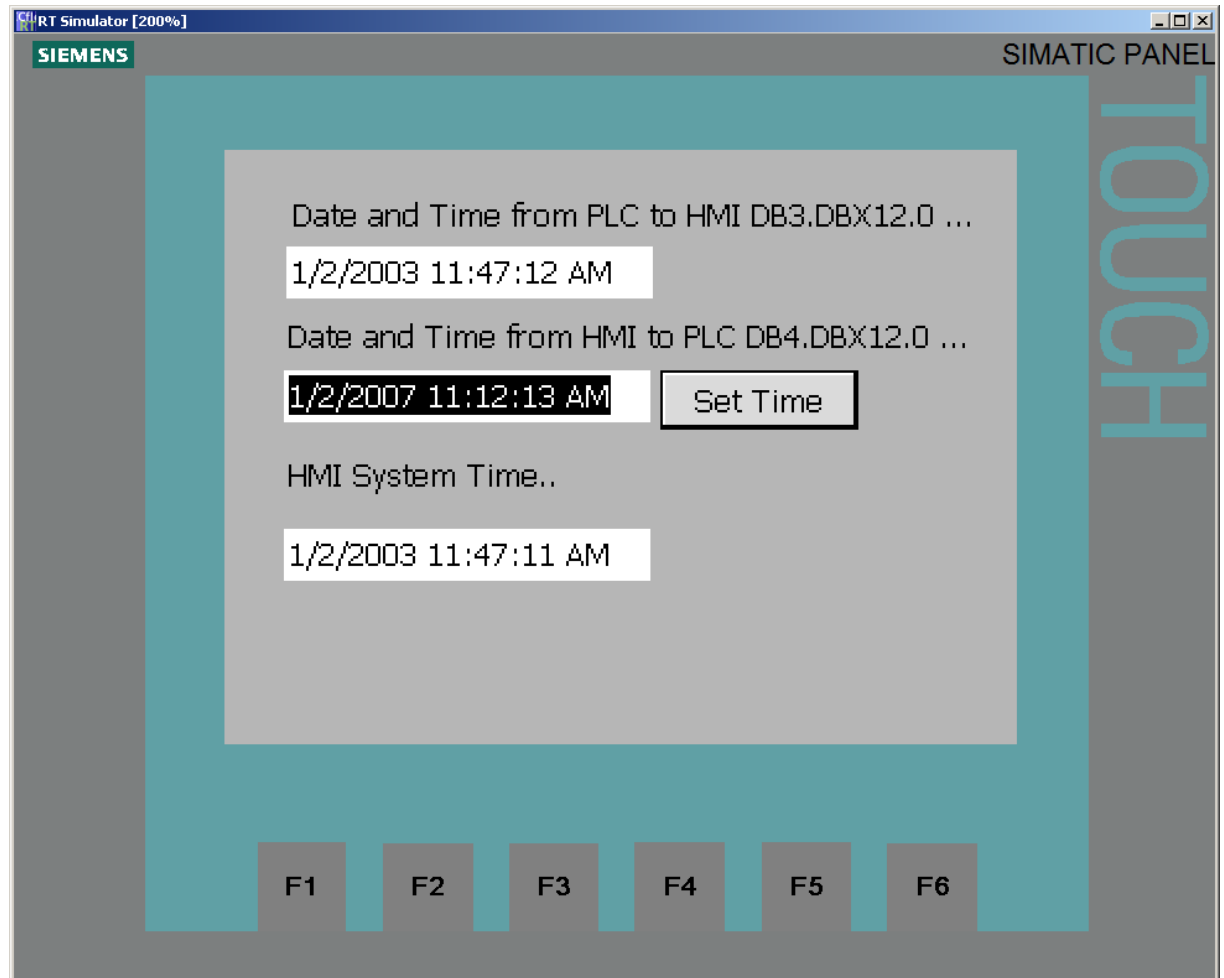
### Date and time synchronization between S7-1200 and HMI with WinCC flexible 2008 SP1



In the HMI it is possible (with IO fields) to see the S7-1200 time and the HMI time:



## Date and time synchronization between S7-1200 and HMI with WinCC flexible 2008 SP1



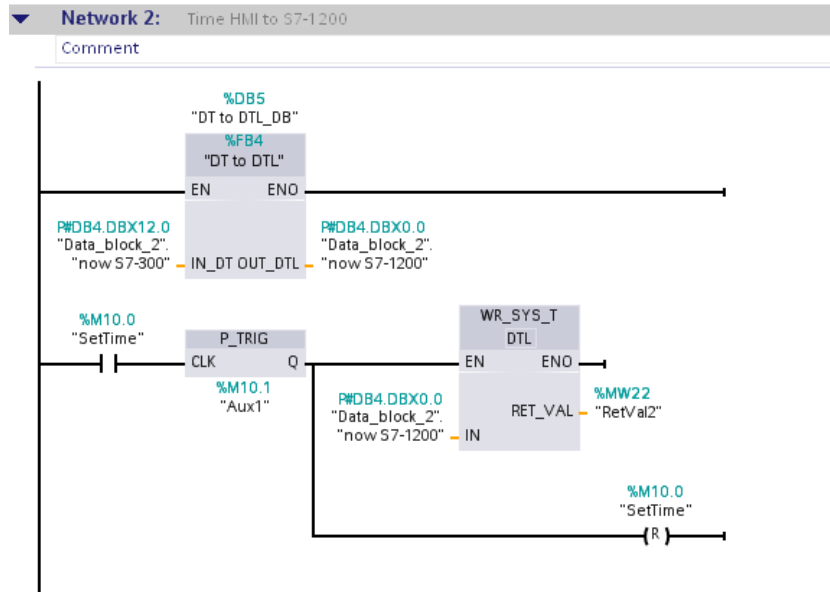
### To transfer the date from HMI to PLC

Define an IO field in HMI linked to DT variable in the HMI, so that the address of it fit with a reserved area in a DB (in this case DB4). Convert this DT format to a S7-1200 DTL format with the help of the FB4 ("DT to DTL").



## Industry IA / DT – Technical Support / Hotline – FAQ

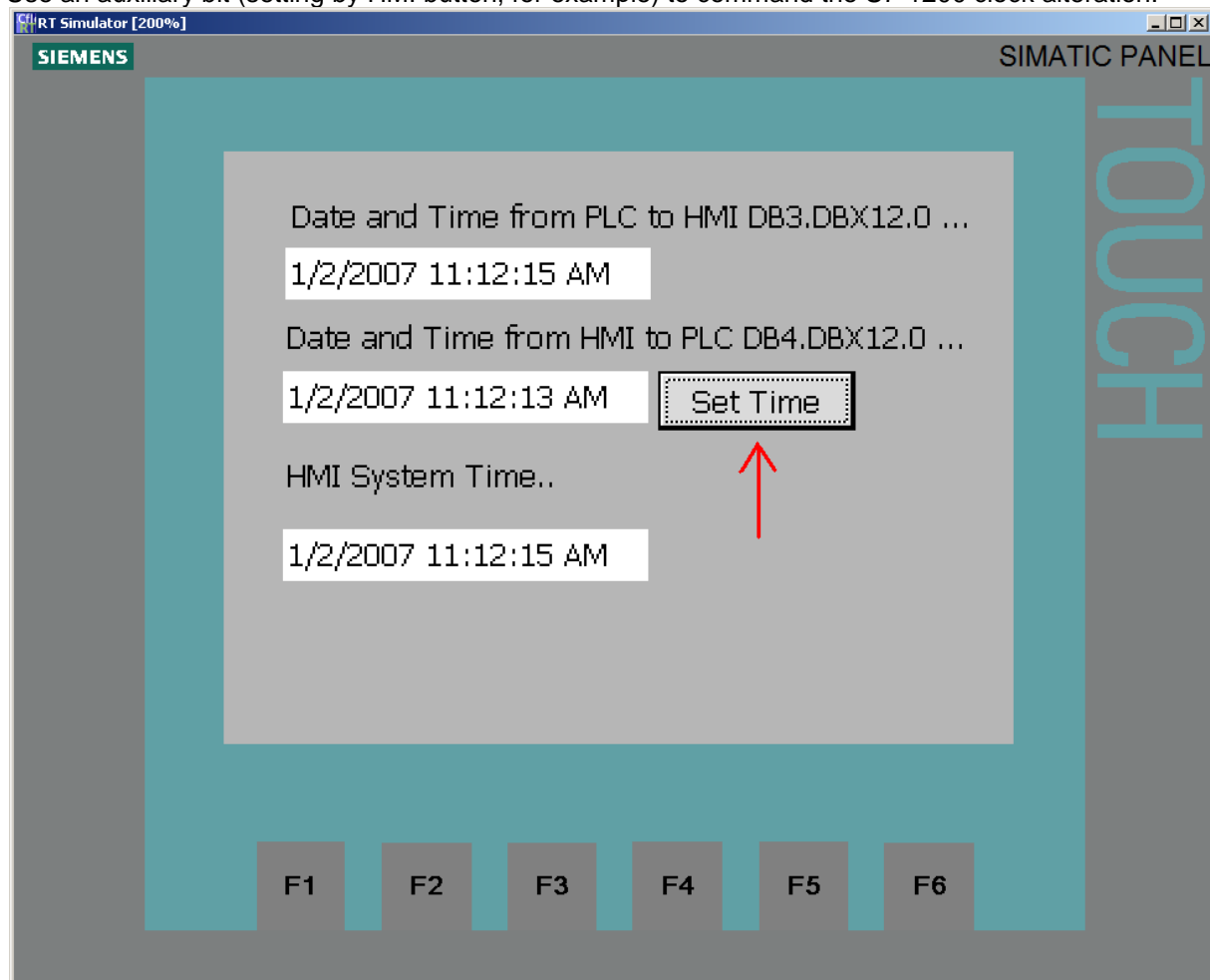
### Date and time synchronization between S7-1200 and HMI with WinCC flexible 2008 SP1





## Date and time synchronization between S7-1200 and HMI with WinCC flexible 2008 SP1

Use an auxiliary bit (setting by HMI button, for example) to command the S7-1200 clock alteration.



### Important:

The sample program is freeware. Any user can use copy and forward this program FREE OF CHARGE. The authors and owners of this program take no responsibility whatsoever for the functionality and compatibility of this software. Use of the software is entirely at the user's own risk. Since this software is free of charge, there is no warranty, nor claim for error correction and hotline support.